

RPBA-01 Configuration - Microsoft Word (Product Activation Failed)

Control Builder M Professional - EGPaper\_PMII (Offline) PMII\_PM

Hardware types

- BasicHwLib 5.1-0
- BasicHwLib 5.1-1
- CIB53SerialContHwLib 1.0-1
- PROFIBUS GSD file import - Device information

Applications

- Controllers
- AF (1)

Device information

	from GSD file	to be used in the system
Model name	ABB Drives RPBA-01	ABB Drives RPBA-01
Description		
PNO ID	16#812	
Vendor name	ABB Oy	
Slave icon in HW tree		MotorType

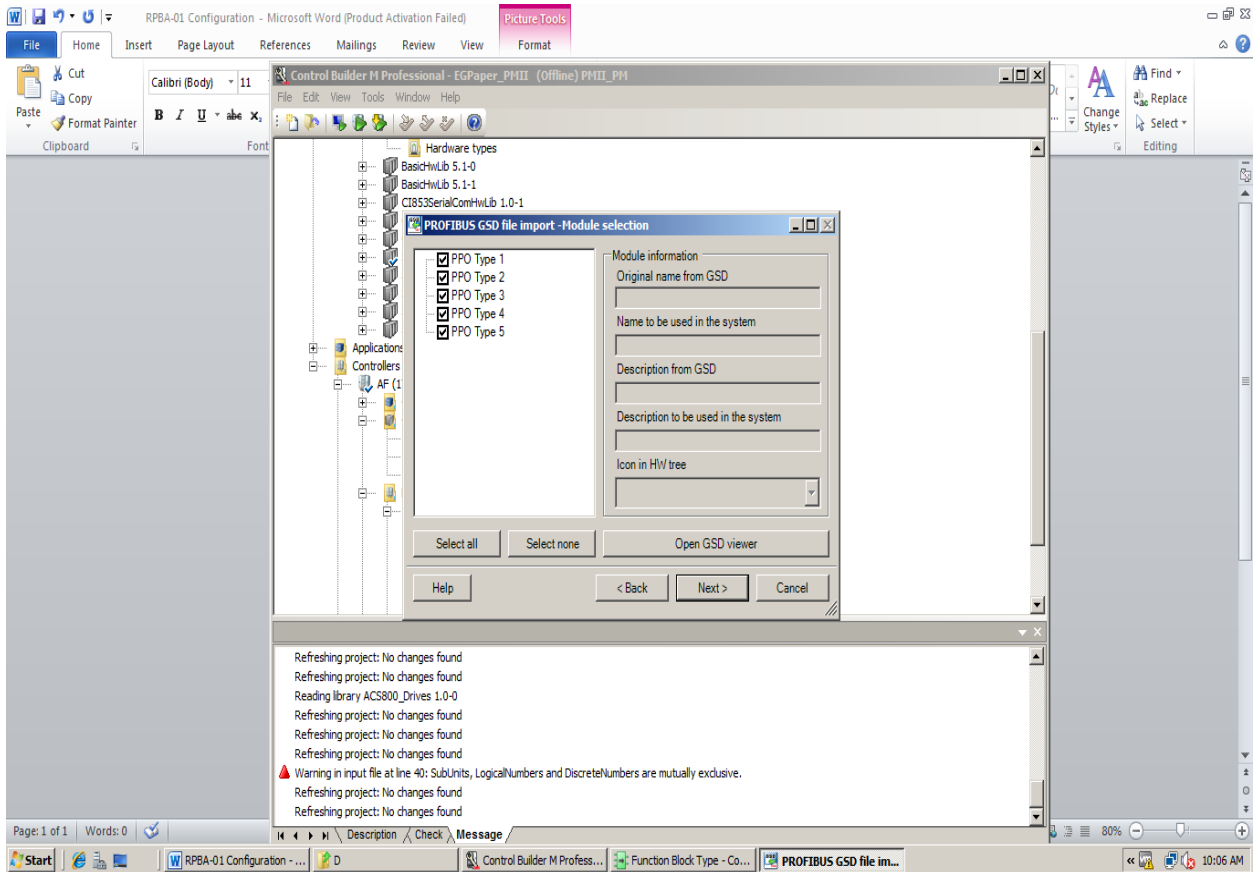
Open GSD viewer

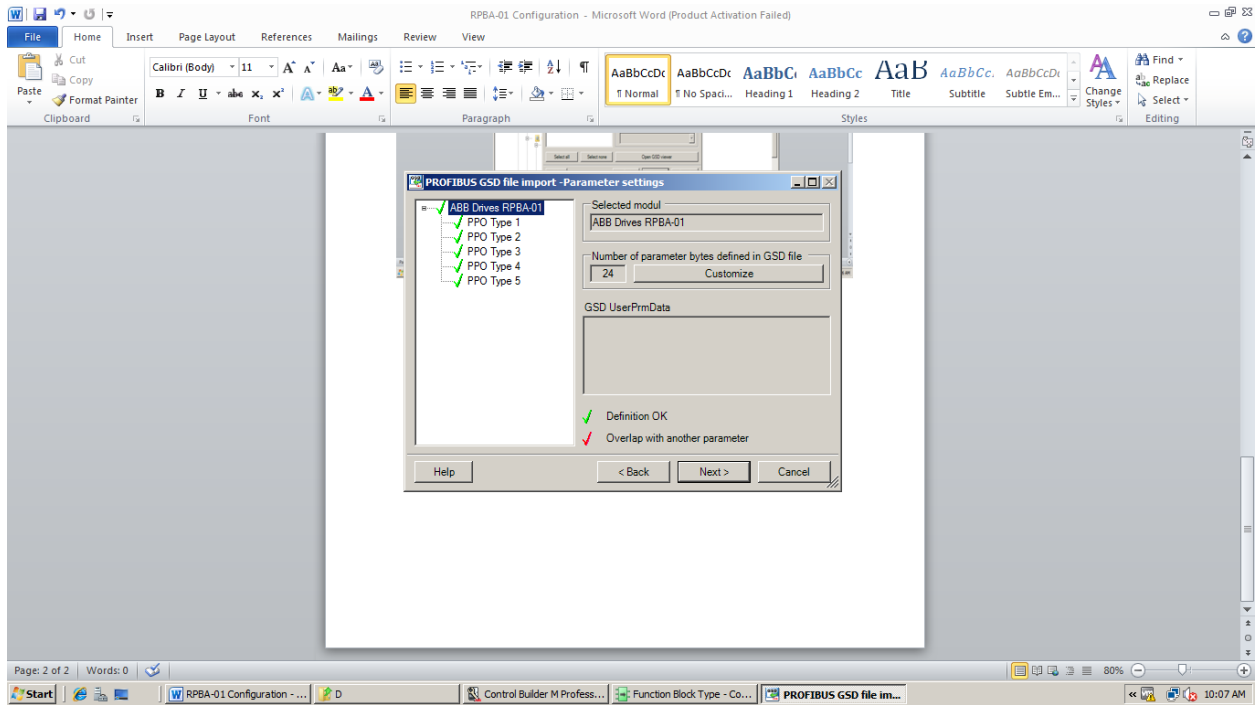
Help < Back Next > Cancel

Refreshing project: No changes found  
Refreshing project: No changes found  
Reading library ACS800\_Drives 1.0-0  
Refreshing project: No changes found  
Refreshing project: No changes found  
Refreshing project: No changes found  
Warning in input file at line 40: SubUnits, LogicalNumbers and DiscreteNumbers are mutually exclusive.  
Refreshing project: No changes found  
Refreshing project: No changes found

Page: 1 of 1 Words: 0

Start | RPBA-01 Configuration | Control Builder M Profess... | Function Block Type - Co... | PROFIBUS GSD file in... | 10:05 AM







PROFIBUS GSD file import - In-area of PPO Type 5

Input area

Configured channels

	Byte, bit	Length	Name	Data type conversion	Features
6	0, 7	16 Bits	Input 1	UInt 16=>DInt	
7	2, 7	16 Bits	Input 2	UInt 16=>DInt	
8	4, 7	16 Bits	Input 3	UInt 16=>DInt	
9	6, 7	16 Bits	Input 4	UInt 16=>DInt	
10	8, 7	16 Bits	Input 5	UInt 16=>DInt	
11	10, 7	16 Bits	Input 6	UInt 16=>DInt	
12	12, 7	16 Bits	Input 7	UInt 16=>DInt	
13	14, 7	16 Bits	Input 8	UInt 16=>DInt	
14	16, 7	16 Bits	Input 9	UInt 16=>DInt	
15	18, 7	16 Bits	Input 10	UInt 16=>DInt	
16	20, 7	16 Bits	Input 11	UInt 16=>DInt	
17	22, 7	16 Bits	Input 12	UInt 16=>DInt	
18	24, 7	16 Bits	Input 13	UInt 16=>DInt	
19	26, 7	16 Bits	Input 14	UInt 16=>DInt	

Buttons: Help, Open GSD viewer, OK, Cancel

RPBA-01 Configuration - Microsoft Word (Product Activation Failed)

Control Builder M Professional - EGPaper PH11 (Offline) PH11 PH1

PROFIBUS GSD file import -Out-area of PPO Type 2

Output area

7 6 5 4 3 2 1 0

0

1

2

3

4

5

6

7

8

9

10

11

12

13

14

15

16

17

18

19

Configured channels

Byte, bit	Length	Name	Data type conversion	Features
0, 7	16 Bits	Output 1	UInt 16=>DInt	
2, 7	16 Bits	Output 2	UInt 16=>DInt	
4, 7	16 Bits	Output 3	UInt 16=>DInt	
6, 7	16 Bits	Output 4	UInt 16=>DInt	
8, 7	16 Bits	Output 5	UInt 16=>DInt	
10, 7	16 Bits	Output 6	UInt 16=>DInt	
12, 7	16 Bits	Output 7	UInt 16=>DInt	
14, 7	16 Bits	Output 8	UInt 16=>DInt	
16, 7	16 Bits	Output 9	UInt 16=>DInt	
18, 7	16 Bits	Output 10	UInt 16=>DInt	

Help Open GSD viewer OK Cancel

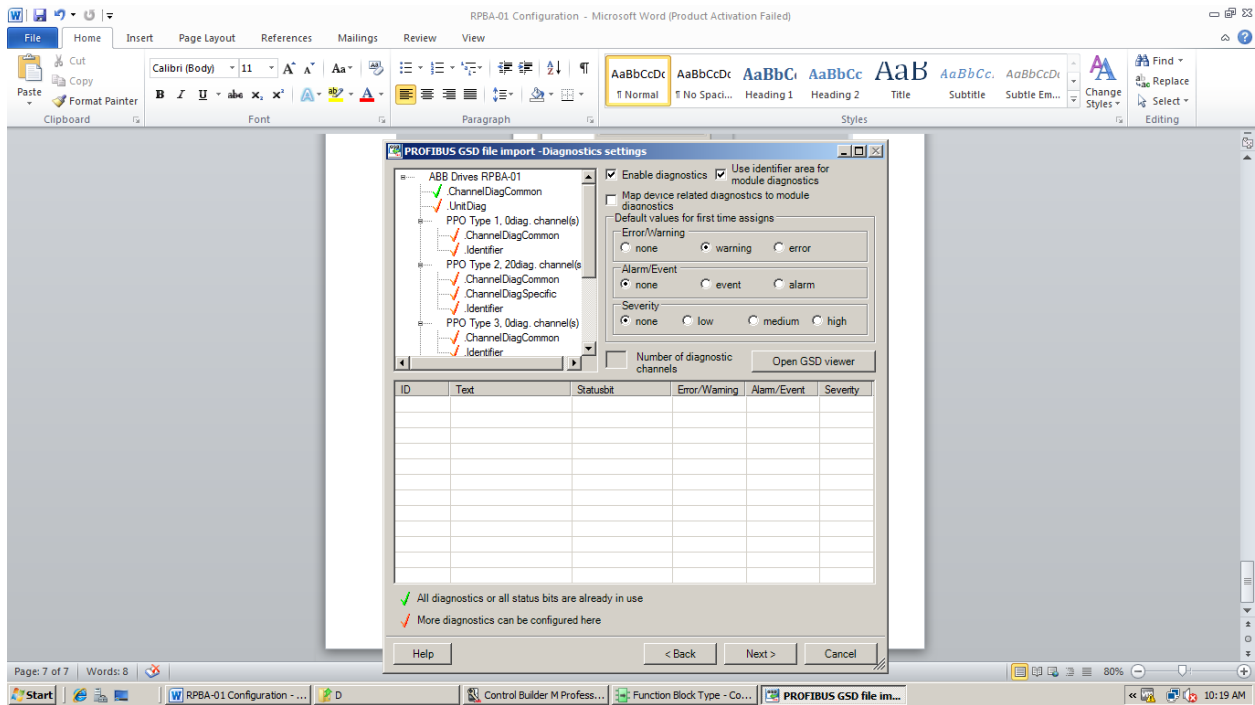
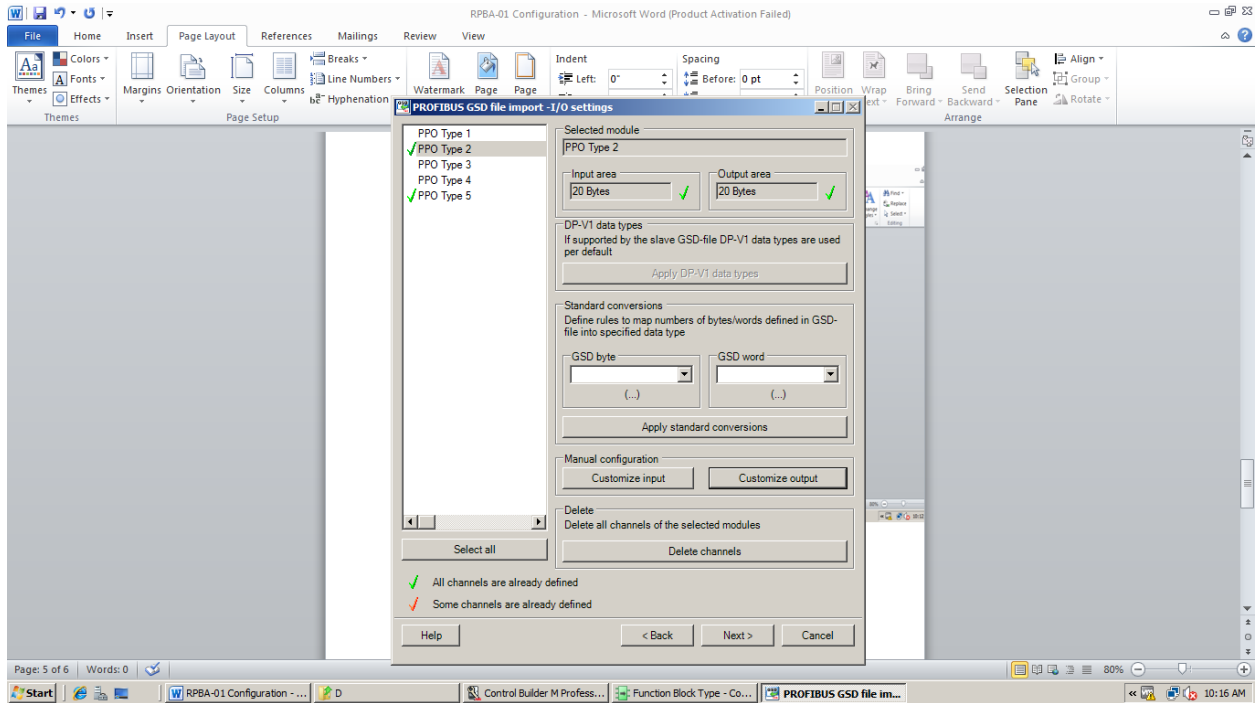
Warning in input file a  
Refreshing project: N  
Refreshing project: N

Help < Back Next > Cancel

Page: 5 of 5 Words: 0

Start | RPBA-01 Configuration - ... | Control Builder M Profess... | Function Block Type - Co... | PROFIBUS GSD file impor... | PROFIBUS GSD file im... | 80% | 10:15 AM

This will applied for all the data configuration



RPBA-01 Configuration - Microsoft Word (Product Activation Failed)

File Home Insert Page Layout References Mailings Review View


Clipboard Font Paragraph Styles Editing

Calibri (Body) 11 A A

Normal No Spaci... Heading 1 Heading 2 Title Subtitle Subtle Em...

Find Replace Select Change Styles

**System 800xA**



Conversion results  
Conversion OK.

View/Print H/VD

Help < Back Finish Cancel

Page: 8 of 8 Words: 8 80%

Start RPBA-01 Configuration - ... Control Builder M Profess... Function Block Type - Co... Device Import Wizard 10:19 AM