

Fault Declaration

According to fig 1, there are two PM511V08 CPUs on the rack, they are redundant. the left one is end user's and the right one is what you have sent, as you see on attached movie, during system's initial startup, the code P2 is depicted on the End user's module and then it can be programed by PC.

For your module, during startup there is no code depicted, and red fault LED turned on. On the other hand, we tried to access the module by PC to program it, but it was not feasible as you can see in Fig 2.

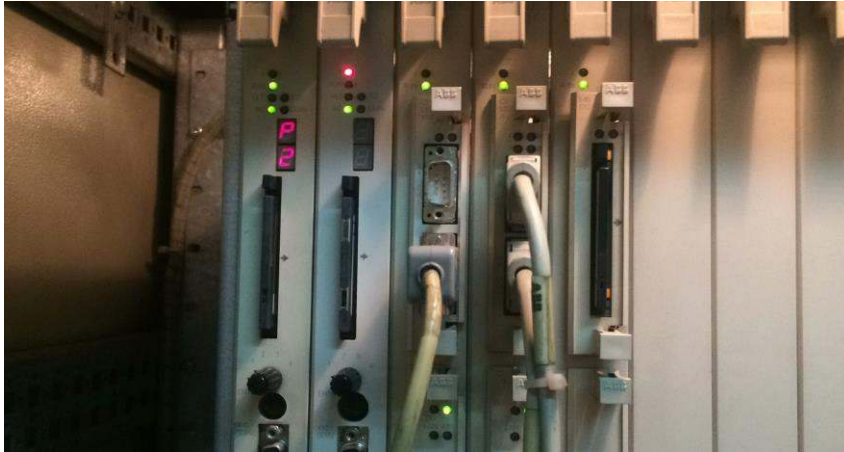


Fig1

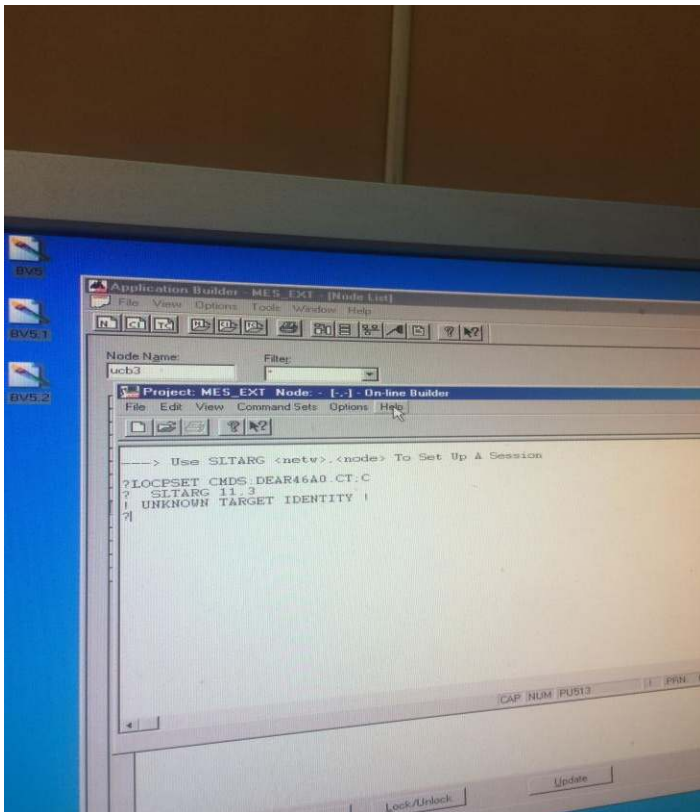


Fig2