

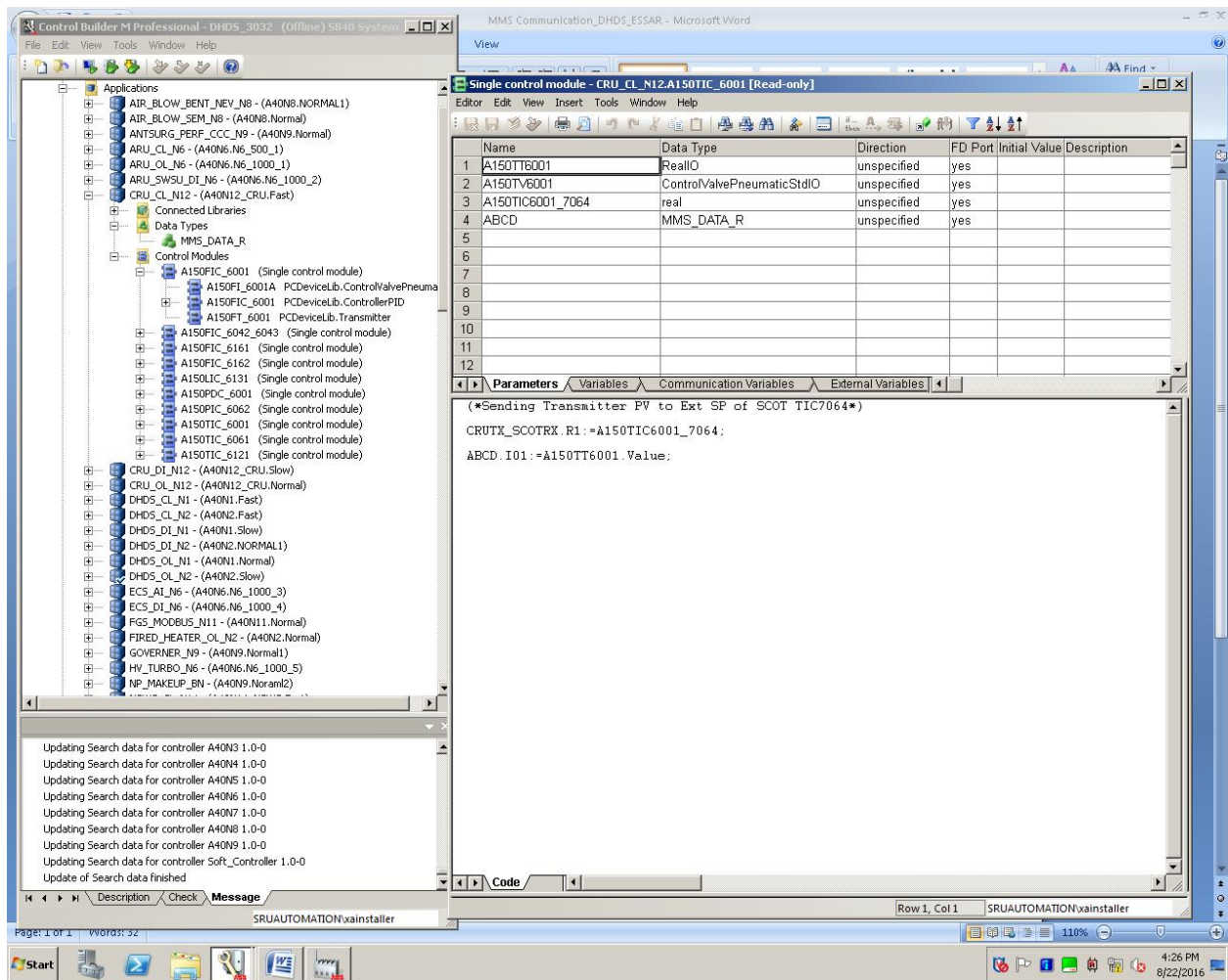
The screenshot displays the Control Builder M1 Professional interface. On the left, a project tree shows various applications and control modules. On the right, a table lists variables with their names, data types, attributes, initial values, I/O addresses, and descriptions. The variable 'ABCD' is highlighted in row 44, with a data type of 'MMS_DATA_R' and an I/O address of 'A40N12_CRU.MMS_'. A status bar at the bottom of the table area shows 'Global Variables' and 'Variables' tabs, with 'Global Variables' selected.

Name	Data Type	Attributes	Initial Value	I/O Address	Access Variables	Descripti
34	A150VT6611A	ReallIO	retain		A40N12_CR	
35	A150VT6611B	ReallIO	retain		A40N12_CR	
36	A150TT6061	ReallIO	retain		A40N12_CR	
37	A150TC6061A	ControlValvePneumaticStdIO	retain			
38	A150TC6061C	ControlValvePneumaticStdIO	retain			
39	Tracking_IO	BoolIO	retain		A40N12_CR	
40	A150PV6062A_I	HSICmdPCV	retain			
41	A150PV6062A_I	ControlValvePneumaticPar	retain			
42	A150FY6042	real	retain			
43	A150FY6161	real	retain			
44	ABCD	MMS_DATA_R	retain		A40N12_CRU.MMS_	
45						
46						
47						
48						
49						
50						
51						
52						
53						
54						
55						
56						
57						
58						
59						
60						
61						
62						
63						
64						
65						
66						
67						
68						
69						
70						
71						
72						

Global Variables Variables

Row 44, Col 1 SRUAUTOMATION\xainstaller

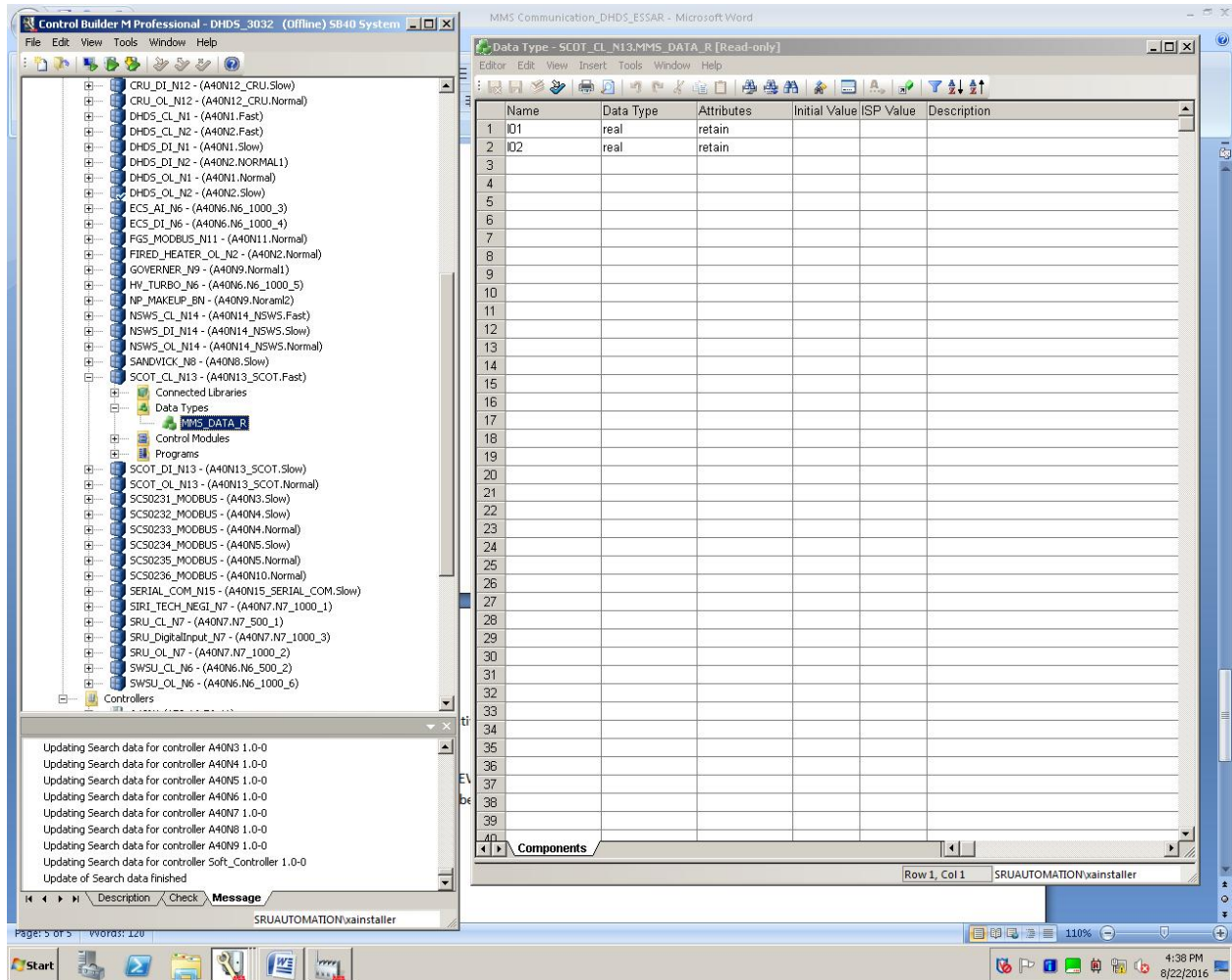
Define Global Variable ex: ABCD

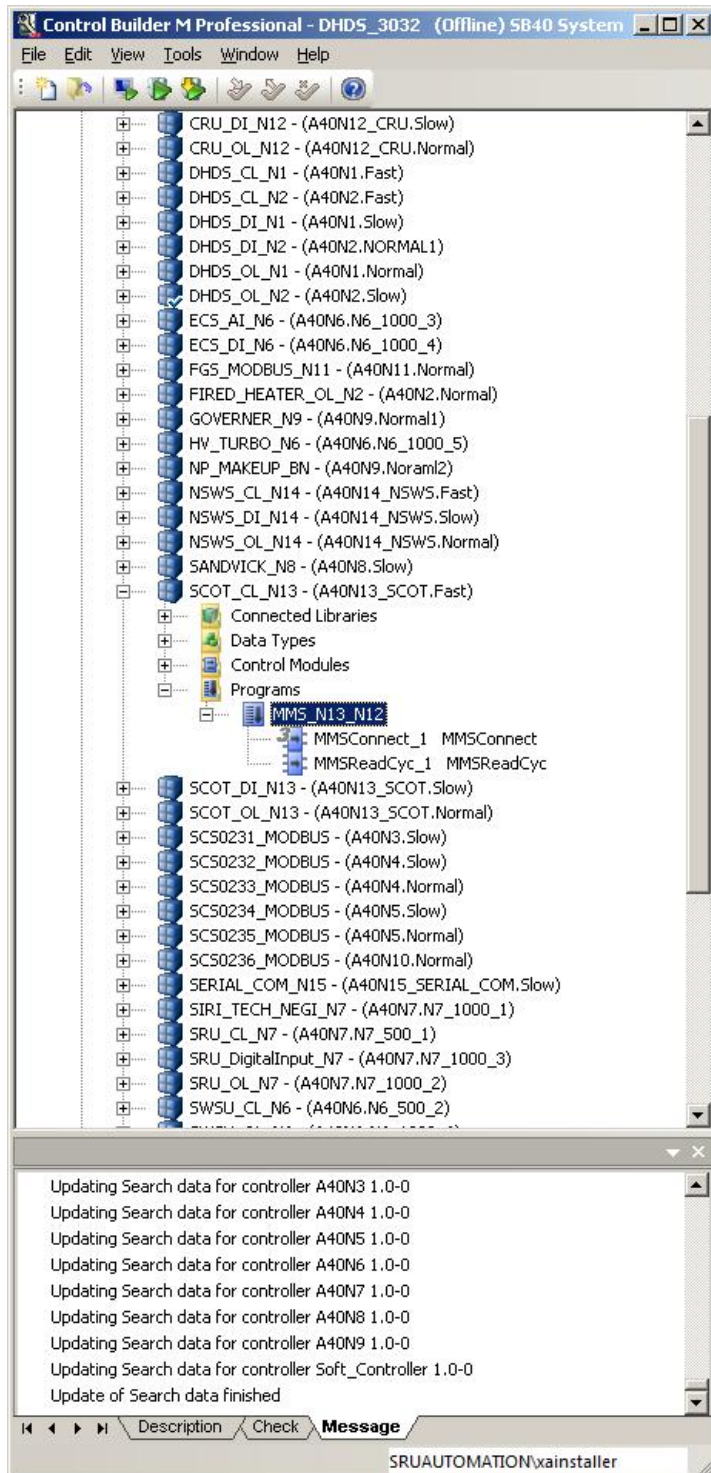


Moving TIC variable value in ABCD.I01

Below mentioned are the activities to be done in Controller where we have to read variable (in this case is Controller 13)

Now we have to define 1) NEW data type MMS_DATA_R 2) define I01 and I02 variable under new data type(MMS_DATA_R) follow below Screenshots for reference.





Create a MMS program in Controller 13 to read access variable, what we have defined in Controller 12.

Program - SCOT_CL_N13.MMS_N13_N12 [Read-only]

Editor Edit View Insert Tools Window Help

Name	Data Type	Attributes	Initial Value	I/O Address	Access Variables	Description
1 NODE_N12	string[40]	retain	'172.16.76.52'			
2 ID_1	MMSCommLib.Comm_Channel_MMS	retain				
3 ABCD	MMS_DATA_R	retain				
4 MMS_N12	string[32]	retain	'MMS_N12'			
5						
6						
7						
8						
9						
10						
11						
12						

Variables Communication Variables Function Blocks

Item Comm. Page ...

Code

Row 1, Col 1 SRUAUTOMATION\vainstaller

4:40 PM 8/22/2016

Now once we have received value in Controller 13 (ABCD.I01 variable) we can move it another variable(for ex: A150TT6001_N)