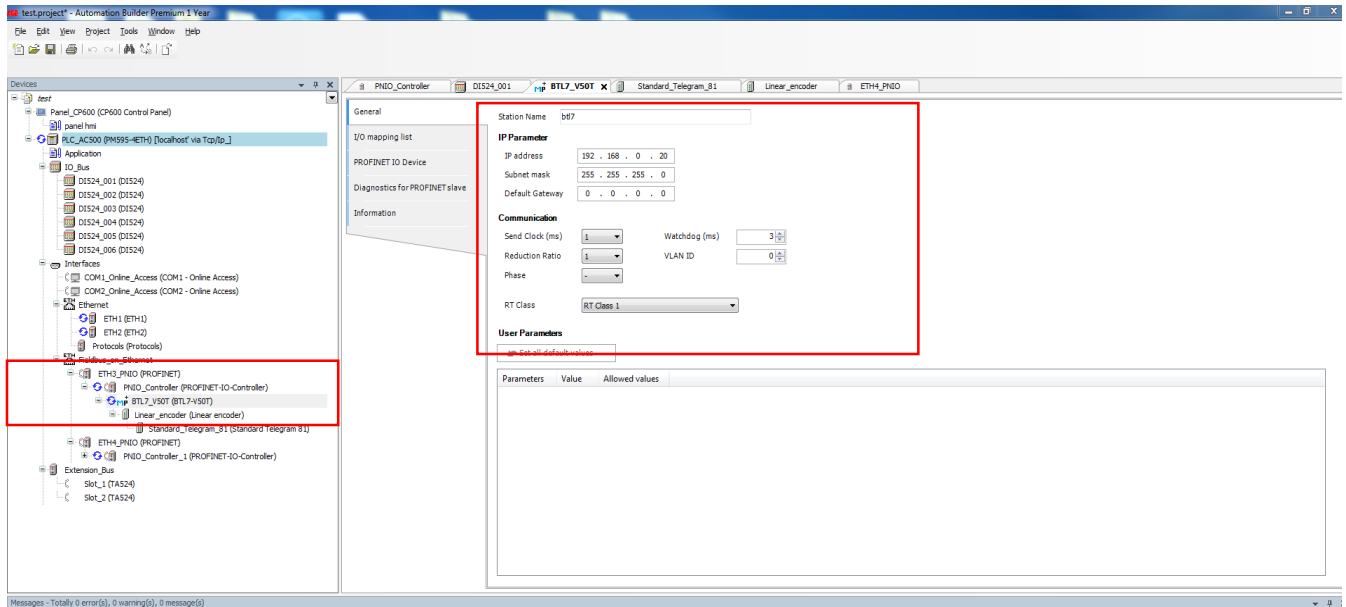
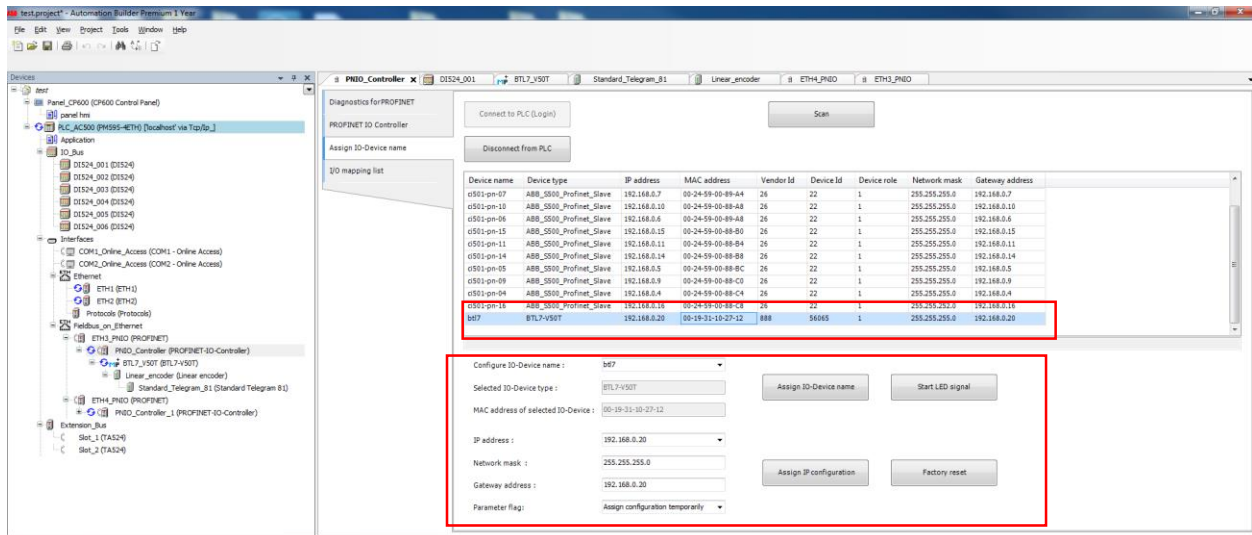


# Hardware setting of Profinet IO for BTL70-V50T



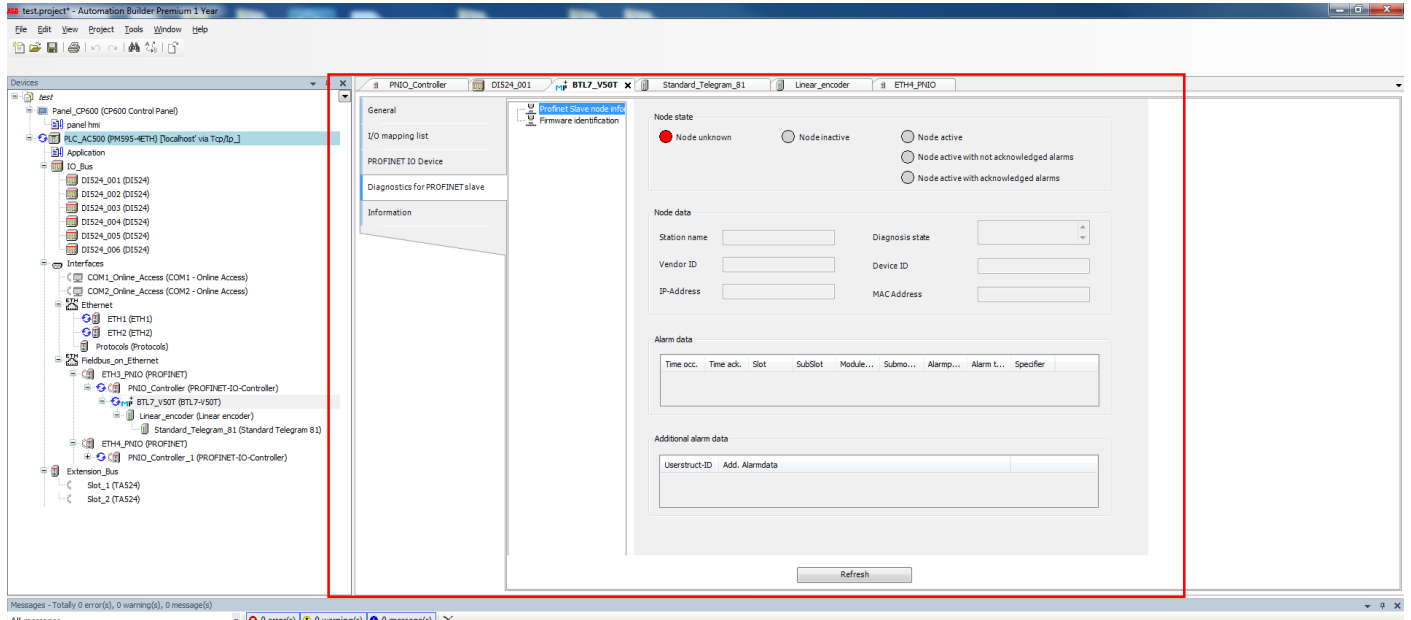
# GSDML Definition for the BTL7-V50T



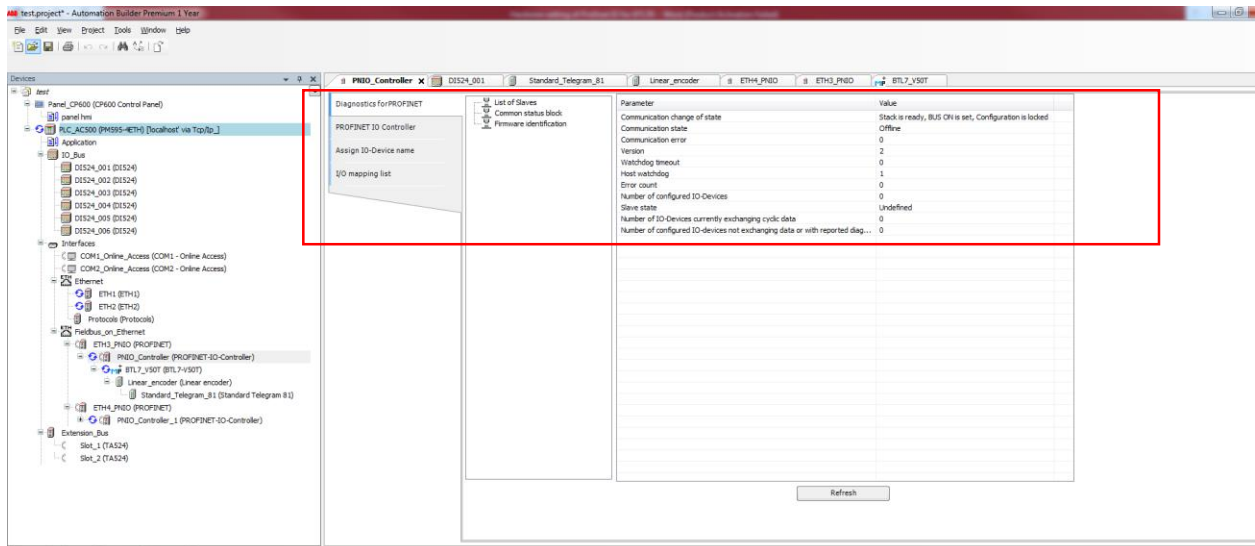
Balluf sensor setting by using GSDML Tool. We also check the “Start LED Signal” and sensor Light start blinking.

## Error IN Communications:

As the program download in the PLC, PLC Stop communications and Slave Status become "Unknow Node" and profinet communication goes on Offline.



## ABB Profinet IO card Version



# GSDML Version

The screenshot displays the Siemens Automation Builder Premium 1 Year interface. The left pane shows a project tree with a 'Devices' folder containing various components like 'Panel\_CP600', 'IO\_Bus', and 'Interfaces'. The right pane shows the configuration for the selected 'BTL7-V50T' device, with a red box highlighting the 'General Information' section.

**BTL7-V50T**

**General Information**

Vendor:	Baluff GmbH
Type:	SI
ID:	0x178_0x2B01_DM 5
Version:	SIWV1.6.2_H0V=3
Description:	Firmware version V3.5.x. Constant Forwarder. Supports FastStartUp, Identification & Maintenance 1-4, RT and DRT Communication.
Order number:	BTL7V50T

**Categories**

Uncategorized

MICROLOGIX  
BTL-V50T