

Figure 1 – Empty Alarm server

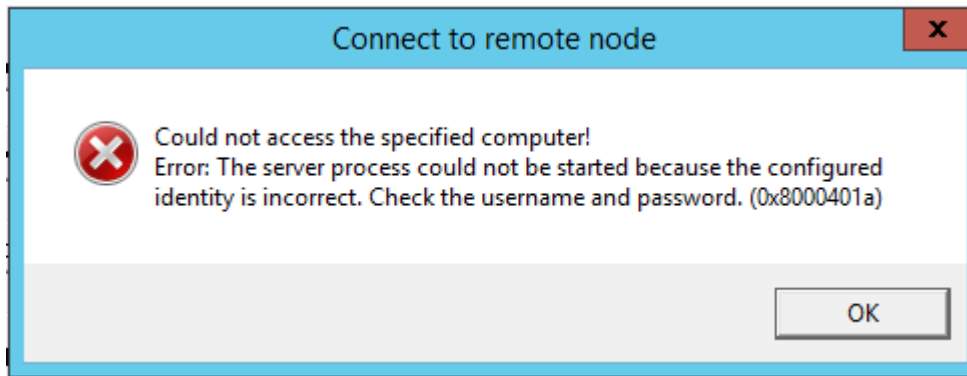


Figure 2 – Error message when AE server is tried overwritten.

800xA // Engineering Workplace

(Enter search name) No Filter Replace

Service Structure

- Services
  - 800xA History Event Collector, Service
  - 800xA History EventServer, Service
  - 800xA History SyncService, Service
  - Alarm Analysis, Service
  - Alarm Logger, Service
  - Alarm Manager, Service
  - Alarm Property Server, Service
  - AspectDirectory, Service
  - BackupService, Service
  - Basic History, Service
  - Cross referencing server, Service
  - Engineering XRef Service, Service
  - Event Collector, Service
  - ABB 800xA Soft Alarms OPC Server, Service Group
  - ABB 800xA System Message Server, Service Group
  - IEC61850, Service Group
    - EventC\_IEC61850\_MV\_SP\_CS3, Service Provider
    - EventC\_IEC61850\_MV\_SP\_CS4, Service Provider
  - SG\_AC800, Service Group
  - SG\_PLC Connect, Service Group
  - Event Storage, Service
  - External Alarm, Service
  - File Set Distribution, Service
  - Industrial IT Archive, Service
  - Lock Server, Service
  - OpcDA\_Connector, Service
  - SG\_Control Network, Service Group
    - SG\_MV, Service Group
      - OPCDA\_Provider\_CS3, Service Provider**
      - OPCDA\_Provider\_CS4, Service Provider
  - SG\_PLC Connect, Service Group
  - Property Transfer, Service
  - Scheduler, Service
  - Server Aspect Controller, Service
  - Soft Alarms, Service
  - Softpoint Server, Service
  - System Message Server, Service
  - System Status, Service
  - Time, Service
  - Workplace Service, Service

Aspects of 'OPCDA_Provider_CS3'	Modified	Modified by	Desc...	Inherited	Category name	Version
<input type="checkbox"/> Alarm Expression	4/25/2008 9:10:1...	ABB 800xA Base	Used...	True	Alarm Expression	1
<input type="checkbox"/> Name	1/5/2016 9:56:43...	800xadam\mkij	The ...	False	Name	1
<input type="checkbox"/> Node Administration Structure	1/5/2016 9:56:43...	800xadam\mkij	[Nod...	False	Node Administr...	1
<input checked="" type="checkbox"/> Object Icon	5/6/2003 11:33:3...	ABB 800xA Base	Icon ...	True	Object Icon	1
<input type="checkbox"/> Service Provider Definition	8/23/2016 11:05:...	800xadam\mkij		False	Service Provide...	1
<input type="checkbox"/> Service Provider Type Reference	1/5/2016 9:56:43...	800xadam\mkij	The s...	False	Service Provider	1
<input type="checkbox"/> Service Structure	1/5/2016 9:56:43...	800xadam\mkij	[Serv...	False	Service Structure	1

OPCDA\_Provider\_CS3:Service Provider Di

Configuration Special Configuration Status

OPC server identity, ProgID:  
 Refresh

OPC server description:

Remote OPC node: (Blank for local)

Figure 3 – Not possible to set the OPC server identity, ProgID.

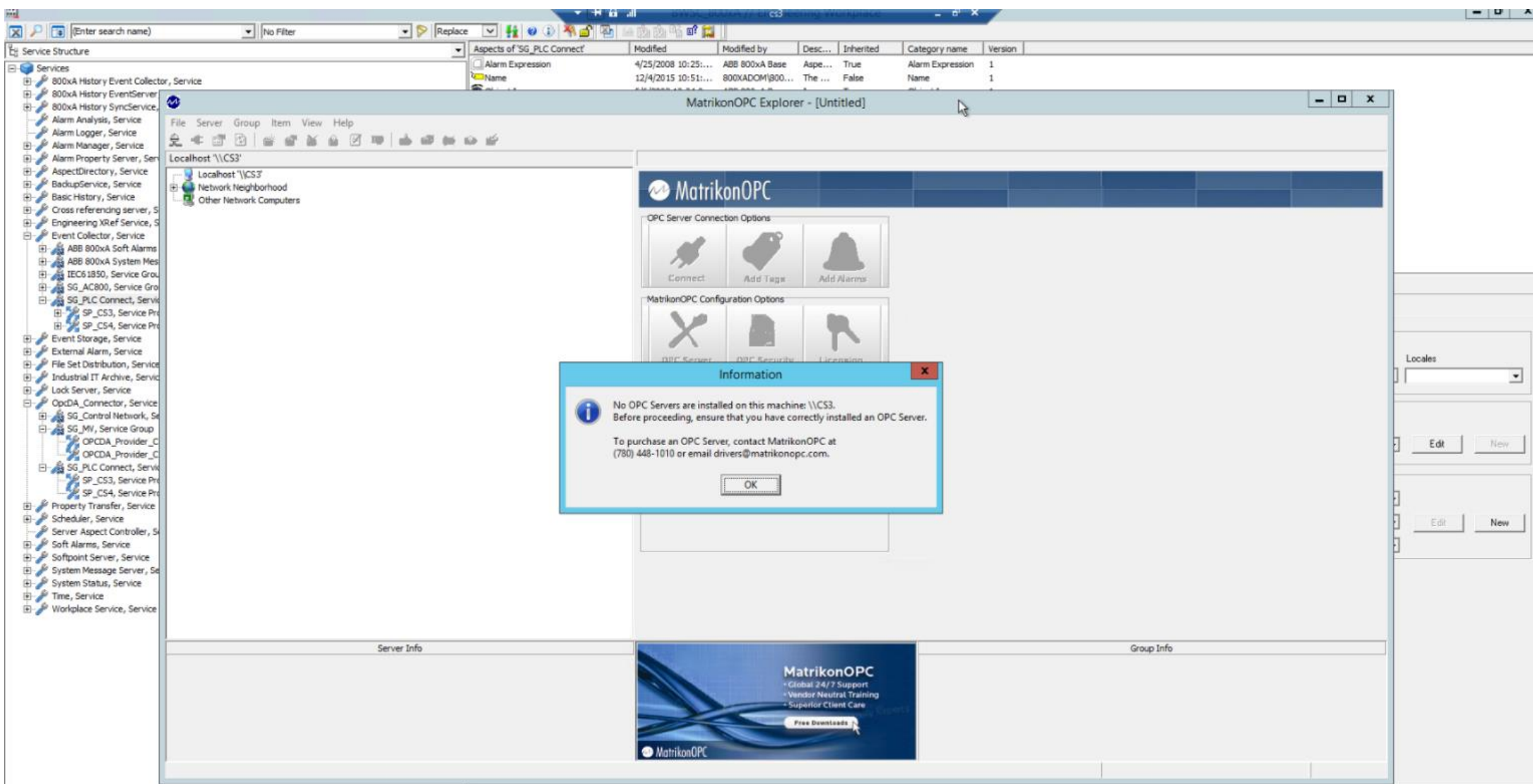


Figure 4 – Matrikon OPC explorer error message.

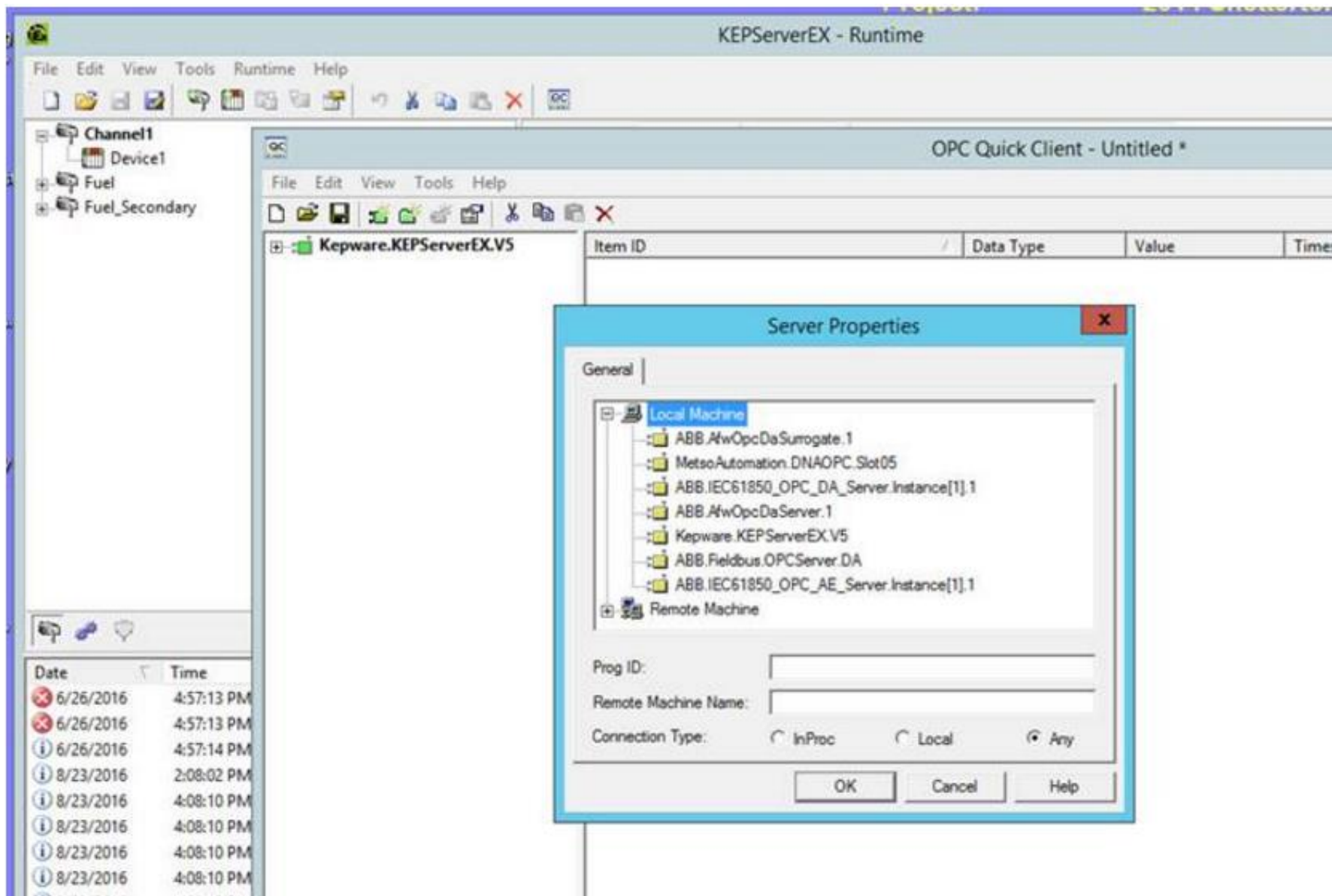


Figure 5 – Local machines OPC servers visible when network disconnected.

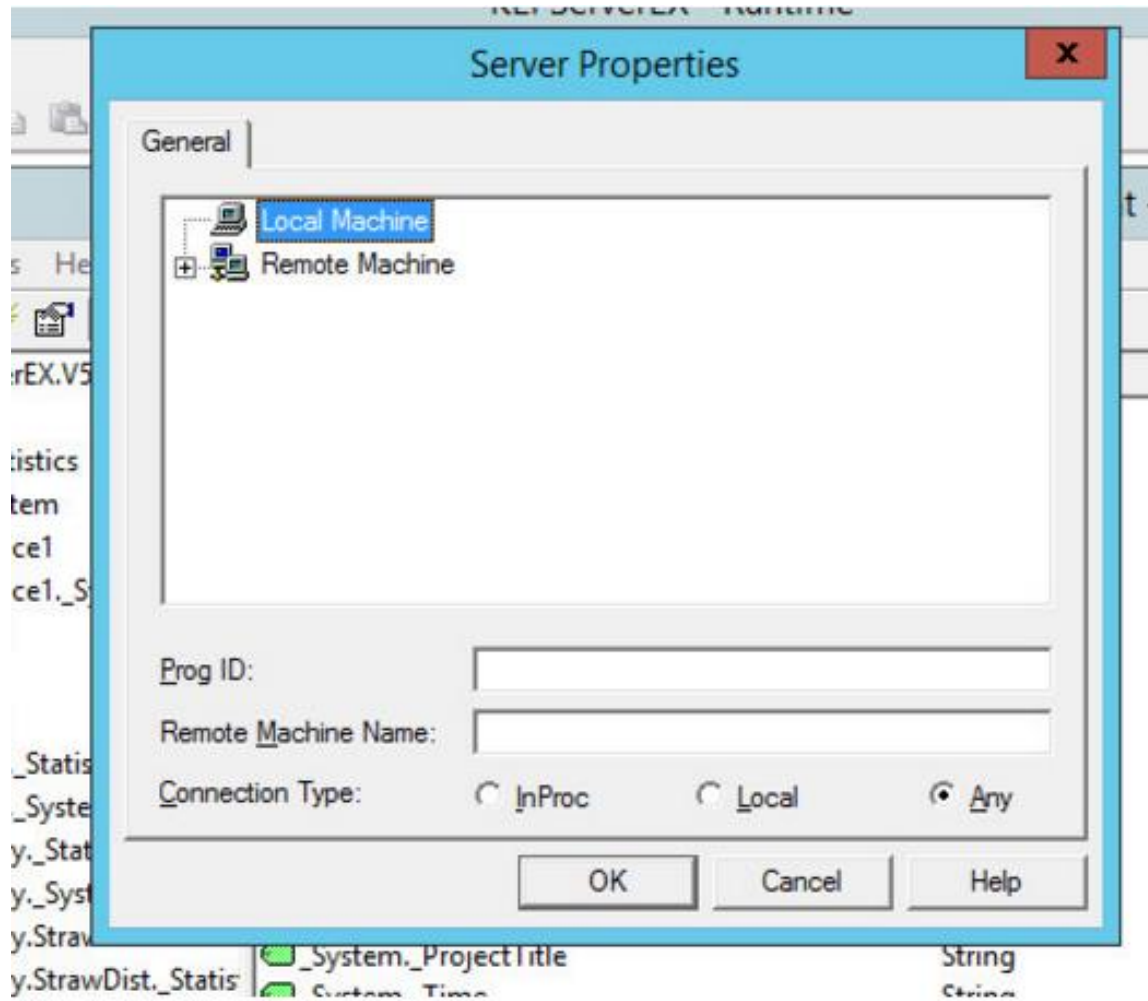


Figure 6 – Local machines OPC servers suddenly not visible when network is connected