



## Technical Description

### Handling of Visual Basic and Process Graphics 2 aspects in upgraded systems

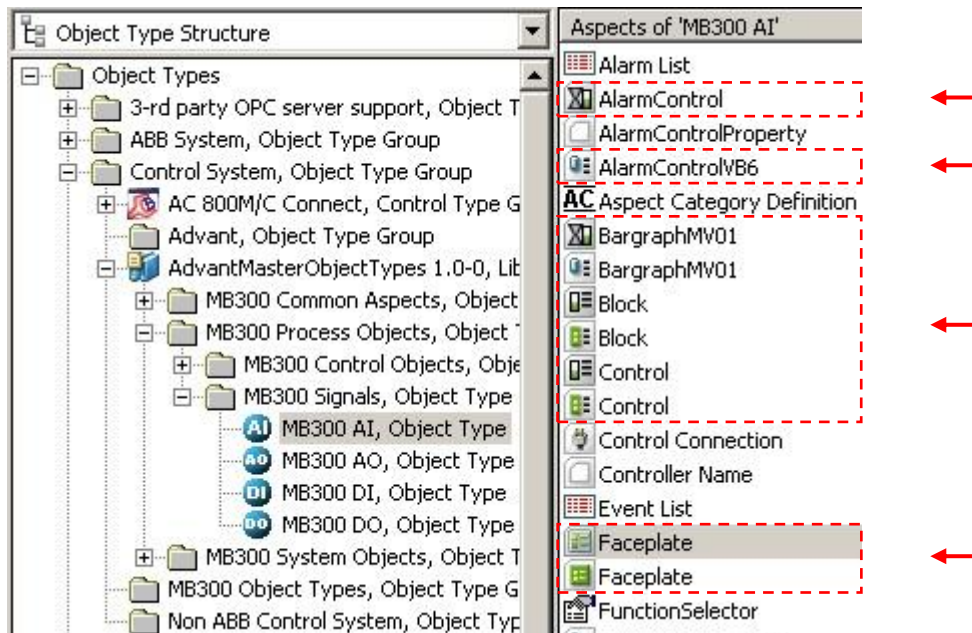
#### Products Concerned

ABB 800xA Base 5.1.0-0 all revisions, all feature packs

All system extensions including both legacy (VBPG) and new (PG2) graphics

#### Description

After upgrading from a previous system version to version 5.1 object types may become equipped with seemingly duplicated graphic aspects from Visual Basic (VBPG) and Process Graphics 2 (PG2) for example Faceplates, Faceplate Elements, Display Elements, and Graphic Displays.



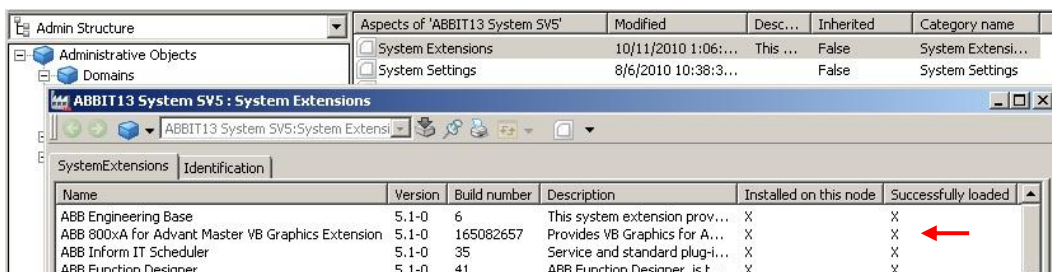
Visual Basic and Process Graphics 2 aspects co-exist side-by-side after upgrade

However, in some (most) situations it is desired to make use of only one set of graphic aspects, VBPG or PG2. This can be easily realized if the graphic aspects have been configured to belong to Extension Libraries (refer to System 800xA Configuration User's Guide, 3BDS011222-510).

For example, ABB 800xA for Advant Master is delivering two extension libraries: *AdvantMasterObjectTypesVB6Ext* and *AdvantMasterObjectTypesPG2Ext*.



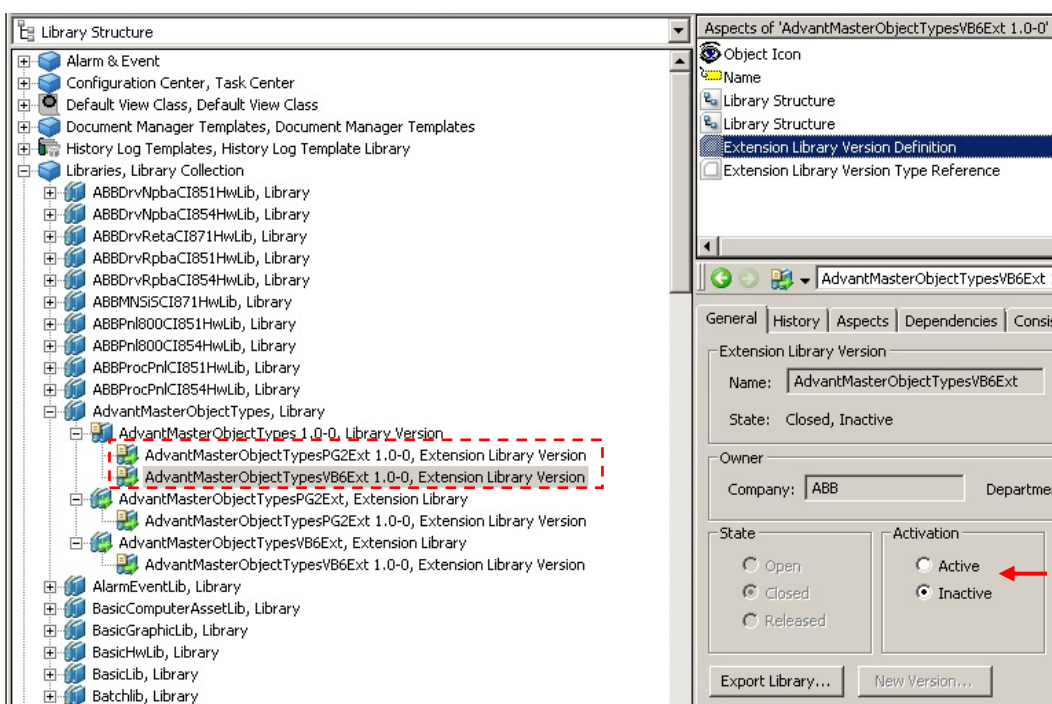
**Note:** depending on product packaging it may be necessary to install and load a dedicated (legacy graphics) system extension to get the extension libraries into place, e.g. the *ABB 800xA for Advant Master VB Graphics Extension* is required to enable the extension library function for 800xA for Advant Master.



*ABB 800xA for Advant Master VB Graphics Extension has been installed and loaded*

When both the old (VBPG) and new (PG2) extension libraries are in place it is possible to switch on/off each extension library's propagation, e.g. to show only VBPG or PG2 aspects on the instance level.

The propagation is controlled from the Extension Library Version Definition aspect on each extension library in the Library Structure.



*The Extension Library Version Definition aspect*

**Note:** The activation / deactivation process may take some minutes to complete if the amount of graphic aspects contained in the extension library is large.

ABB AB



**REVISION**

Rev. ind.:	Page (P) Chapt. (C)	Description	Date Dept.

ABB AB