

E143 – OPC Data Access

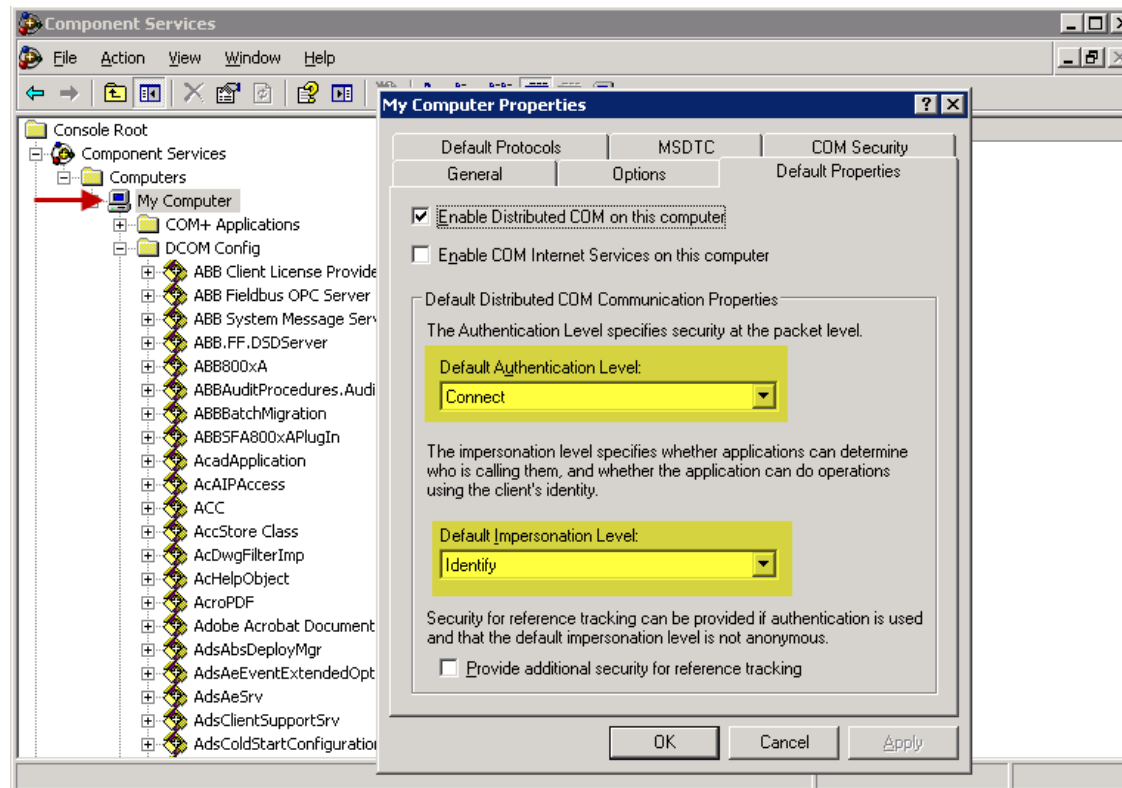
Third Party OPC DA Connection via DCOM

- The Configuration User's Guide (3BDS011222) is correct, but...
 - May be very complex to fully understand
 - Does not put system hardening in focus
- It is easy to make mistakes!
 - Mix up **local** vs **domain** vs **800xA** user accounts
 - Two separate accounts are often required
 1. Connect account (to enable DCOM calls between two computers)
 2. 800xA User Account (to enable entry to 800xA)
 - Firewall settings
 - Bi-directional DCOM settings is required to enable asynch. calls
 1. Server computer must allow client to login and launch OPC server
 2. Client computer must allow OPC server to call back to OPC client

E143 – OPC Data Access

Third Party OPC DA Connection via DCOM

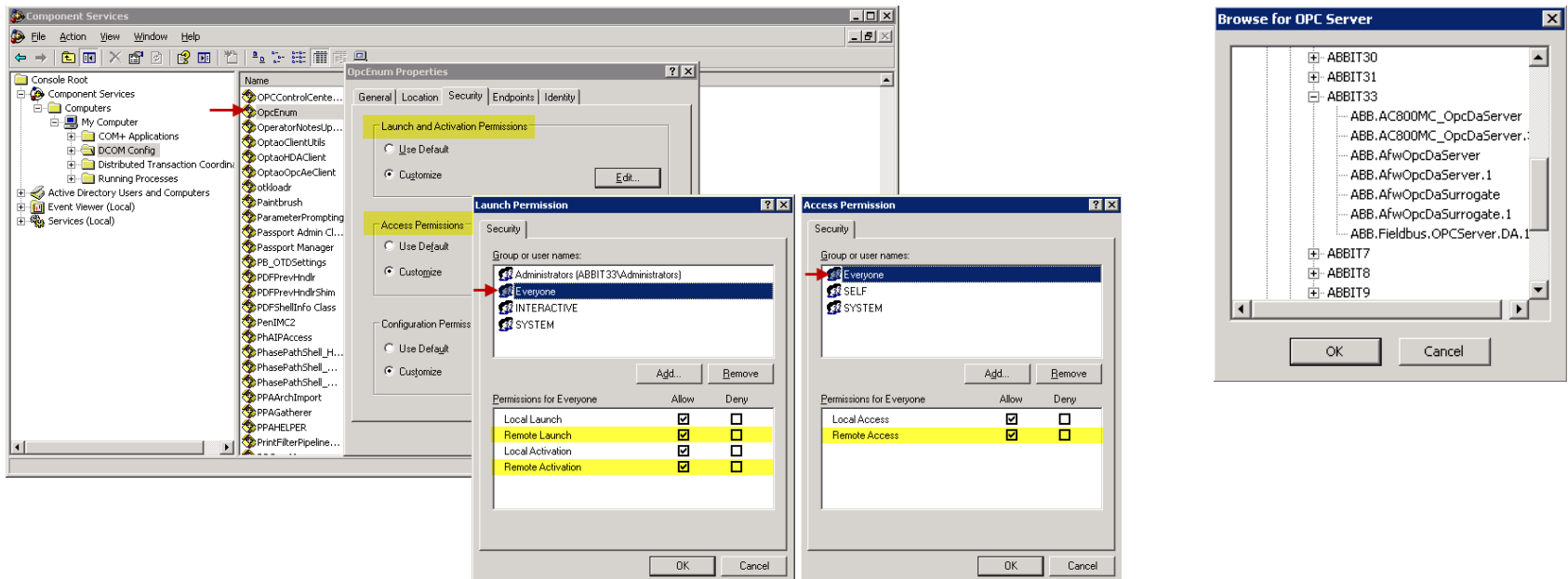
- Required settings in both server and client computer



E143 – OPC Data Access

Third Party OPC DA Connection via DCOM

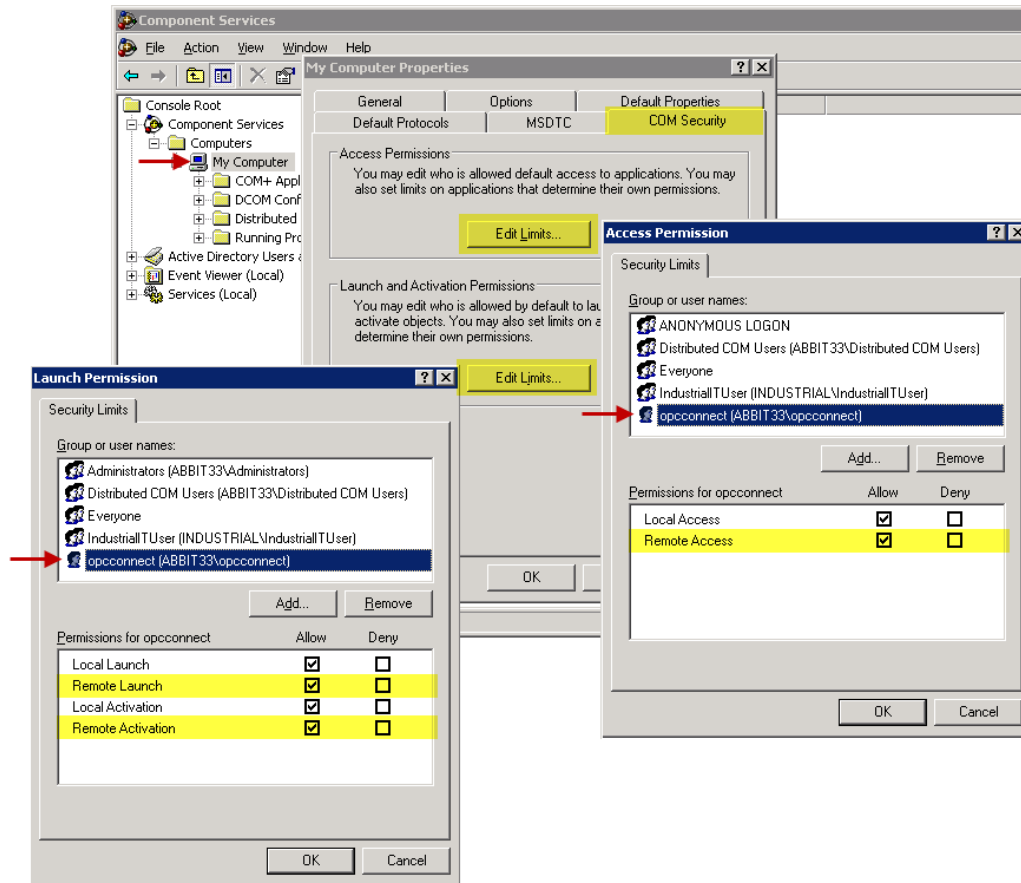
- Browsing for remote OPC servers require OPCEnum.exe in server
- OPCEnum.exe require DCOM Remote Access + Launch + Activation
- Defining a dedicated connect account is more secure than **Everyone**



E143 – OPC Data Access

Third Party OPC DA Connection via DCOM

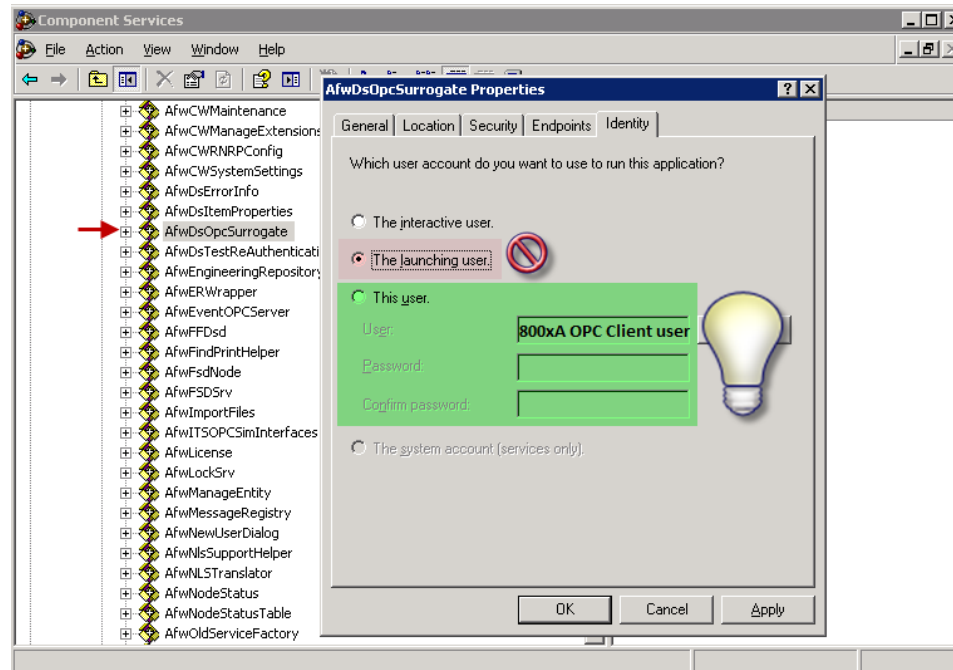
- The connect account must be granted access with DCOMCNFG.EXE



E143 – OPC Data Access

Third Party OPC DA Connection via DCOM

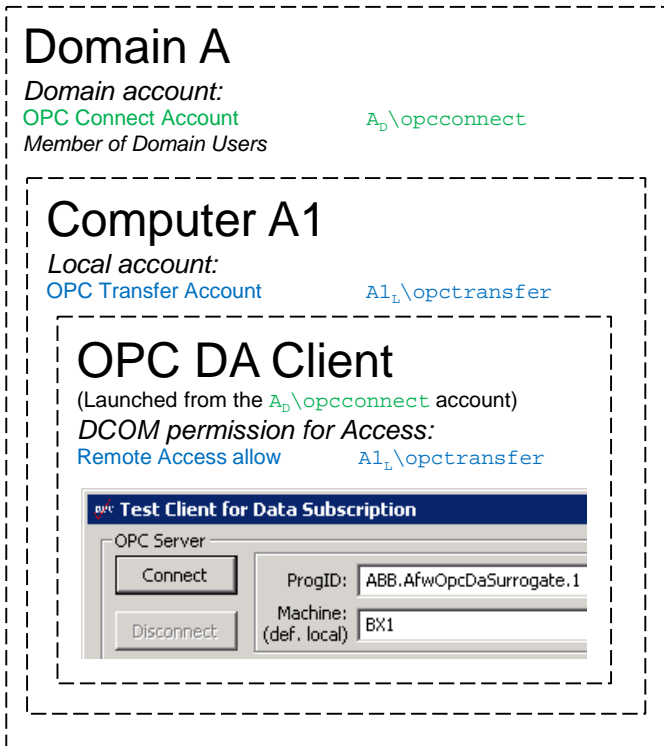
- Default DCOM settings on AfdDsOpcSurrogate.1 does no longer work from 5.0 SP2 RevE and 5.1 RevB due to system hardening
- A dedicated (preferably non-admin) 800xA user is required as launching identity for the AfdDsOpcSurrogate.1 server



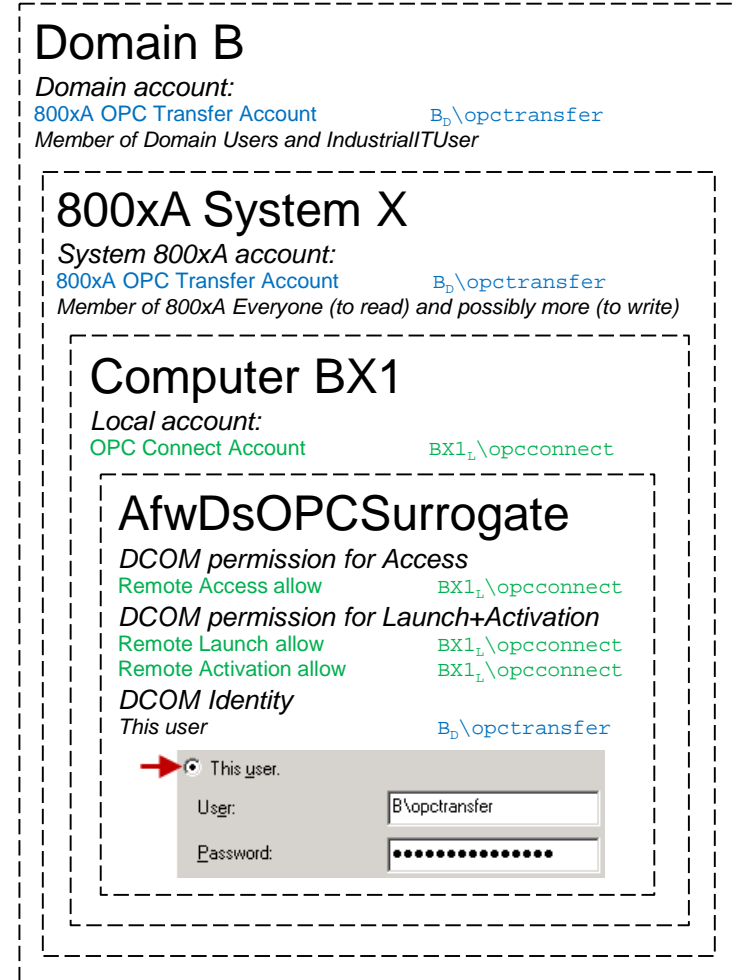
E143 – OPC Data Access

Third Party OPC DA Connection via DCOM

Client



Server



The account's passwords must match:

$A_L \backslash \text{opctransfer}$ = $B_D \backslash \text{opctransfer}$
 $A_D \backslash \text{opcconnect}$ = $BX1_L \backslash \text{opcconnect}$

E143 – OPC Data Access

Third Party OPC DA Connection via DCOM

