	ABB India Limited Instruction	3BYN200811E0131
Prepared: Kumar Mayank Pankaj Aman Kumar Singh	Prepared date: 2014-12-12	Approved: Shiv Kumar
	Approved date: 2014-12-12	Lang: en
	Revision: A	Page: 1/6

iBA Installation & Configuration Guide

1. General

This Installation and Configuration Guide covers the Prerequisites required, along with the step by step guide for smooth and easy Installation of **iBA Installation and Configuration**.

This document illustrates step by step procedure along with the appropriate screenshots to be performed for the installation & configuration of iBA software. Further, steps to be followed for license entry is also shown.

Some specific installations are project specific and cannot be set without proper documentation either from client or OEM. In those cases, all steps will be listed. The project is responsible for documenting the settings chosen. Deviations shall be formally reported back to the document owner immediately.

2. Intended User

Intended Users of this document are Application Engineers with relevant training in iBA System.

3. Definitions & Abbreviations

PDA – Process Data and Acquisition

4. Documentation

✓ ibaPDA-V6_v6.27_en_A4

5. Installation Prerequisites

❖ Besides the operating system requirements, the minimum software requirements are:

✓ Adobe Acrobat Reader version 9.0 or later.

Acrobat Reader is required to read the online manuals.

Prepared: Kumar Mayank Pankaj Aman Kumar Singh	Prepared date: 2014-12-12	Approved: Shiv Kumar	Approved date: 2014-12-12	Lang: en	Revision: A	Page: 2/6
--	------------------------------	-------------------------	------------------------------	-------------	----------------	--------------

6. Step by Step Instructions

6.1 Installation Procedure

- Login as an Administrator account in Windows.
- Insert the iBA PDA DVD into the drive. Go to the ibaPDA_Vx.xx.x folder located in the root directory. Run the setup file located in the folder. If the computer system meets the system prerequisites then you will get a dialog box as shown in [Figure 1](#). Select **all the options** and then click on Next.

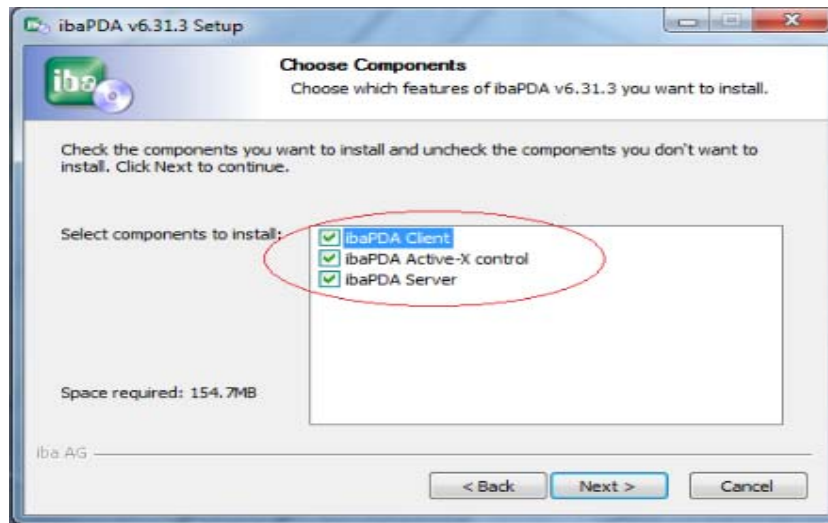


Figure 1. Selecting Type of Installation

- In the select user account, select the Local System account as shown in figure 2. Click Install.

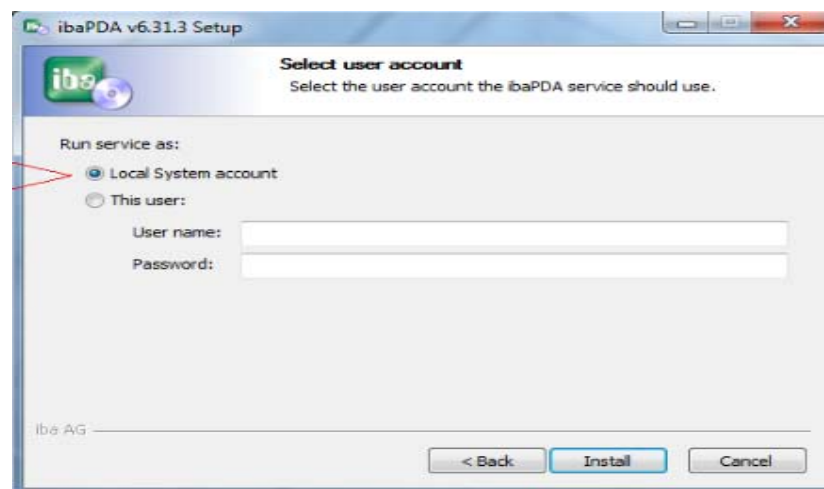


Figure 2: Selection of User Account

ABB	ABB India Limited Instruction	3BYN200811E0131
Prepared: Kumar Mayank Pankaj Aman Kumar Singh	Prepared date: 2014-12-12 Approved: Shiv Kumar	Approved date: 2014-12-12 Lang: en Revision: A Page: 3/6

- After the installation is complete go to the right corner of the task bar and right click on the iBA PDA icon and click status. Refer [Figure 3](#) for the visual.

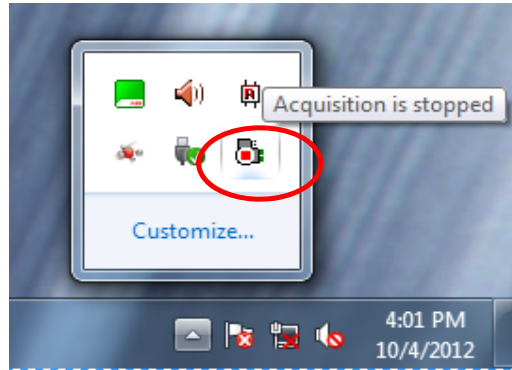


Figure 3: Checking status

- Insert the iBA dongle provided and wait for the status screen to show the details of the license as shown in [Figure 4](#).

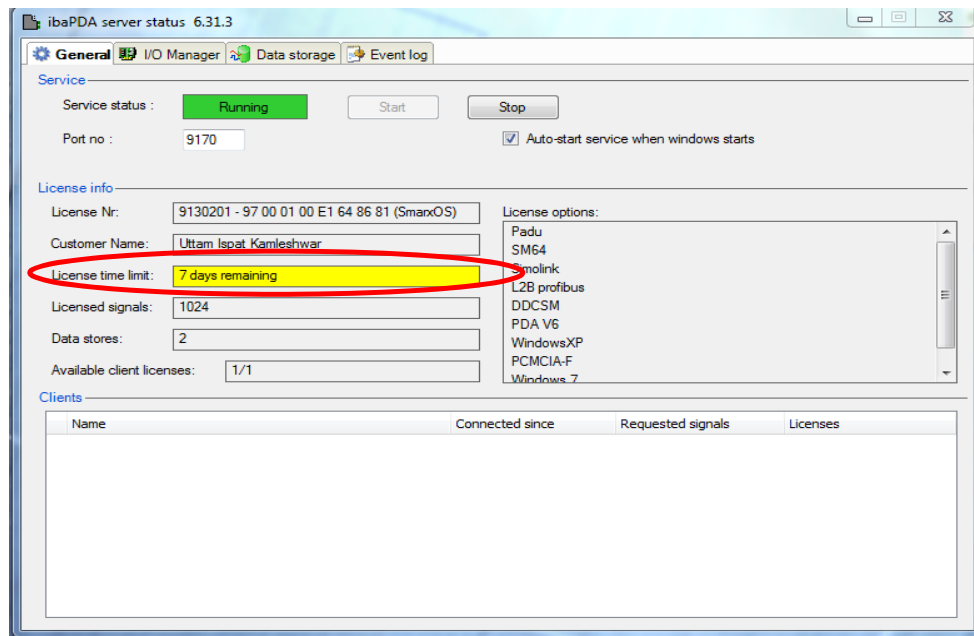


Figure 4: License Status

- Usually iBA dongle comes with Temporary License with validity period of 90 days (refer Figure 4). After installation, we have to provide necessary details to iBA Technical Support team to provide Patch File for Permanent License. After the installation of Patch File, License time limit will becomes unlimited.

Prepared: Kumar Mayank Pankaj Aman Kumar Singh	Prepared date: 2014-12-12	Approved: Shiv Kumar	Approved date: 2014-12-12	Lang: en	Revision: A	Page: 4/6
--	------------------------------	-------------------------	------------------------------	-------------	----------------	--------------

7. Hardware Configuration

Generally we use any of the following types of PCI cards for Iba Communication

- ❖ IbaFOB-2i-D (2 Input channels)
- ❖ IbaFOB-io-D (1 Input & 1 Output Channel)
- ❖ IbaFOB-2io-D (2 Input & 2 Output Channels)
- ❖ IbaFOB-4i-D (4 Input Channels)

7.1 Steps for Iba Card Installation

- Make sure that the Power Supply to CPU is Switched Off.
- Insert the Iba Card into the PCI Slot (Figure 5) provided on the motherboard of the CPU.

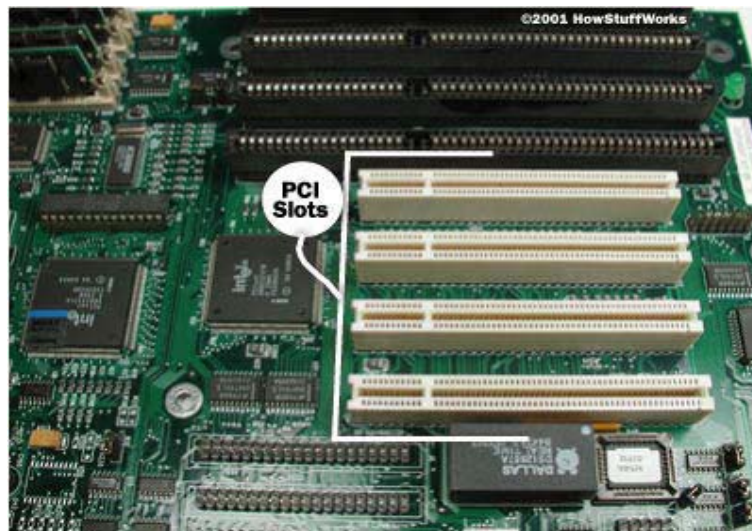


Figure 5: PCI Slot

- Close the CPU Cabinet and turn the system ON.
- If the Card is mounted & installed correctly you can see the green LEDs of each slot of IBA card blinking. Also you can open PDA Client, then click on the Iba I/O Manager icon as shown in Figure 6.

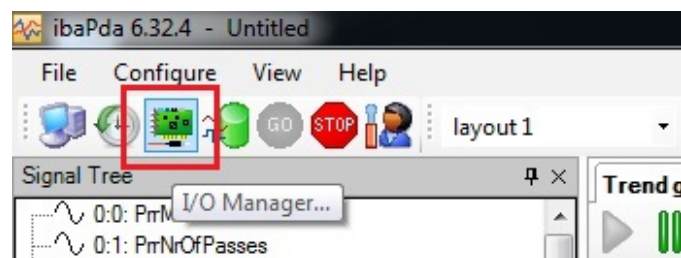


Figure 6: Opening iba I/O Manager

Prepared: Kumar Mayank Pankaj Aman Kumar Singh	Prepared date: 2014-12-12	Approved: Shiv Kumar	Approved date: 2014-12-12	Lang: en	Revision: A	Page: 5/6
--	------------------------------	-------------------------	------------------------------	-------------	----------------	--------------

- In IBA I/O Manager, on the left hand side it shows the type of card installed. Click on the card (IbaFOB-4i-D in our case as shown in [Figure 7](#)). In the Configuration window the status of card is shown (Look for a green Light on the Top Right of the Card.) as in [Figure 7](#).

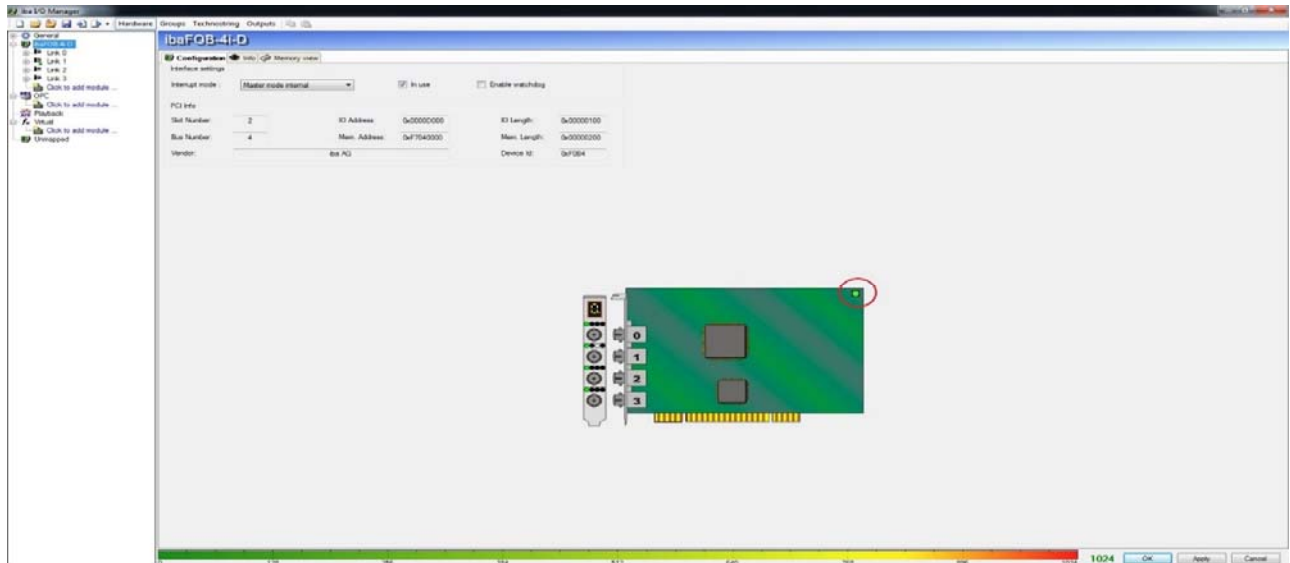


Figure 7: Iba I/O Manager

- Now Connect the FO Cable to any of the slots of IBA Card as Shown in [Figure 8](#).
- If the Communication is healthy, a white LED glows in the connected slot of the IBA Card as shown in [Figure 8](#). Same can be seen in the Iba I/O manager Configuration window.



Figure 8: Iba card Healthy Communication Indication



ABB India Limited
Instruction

3BYN200811E0131

Prepared:	Prepared date:	Approved:	Approved date:	Lang:	Revision:	Page:
Kumar Mayank Pankaj Aman Kumar Singh	2014-12-12	Shiv Kumar	2014-12-12	en	A	6/6

REVISION

Rev.ind.	Page (P) Chapt. (C)	Description	Date Dept./Name
-	-	New Document	2014-12-12 INABB/PA-IS/KMP
A	Page(4) Chapter(7)	iBA Hardware Configuration	2015-01-16 INABB/PA-PI/AS