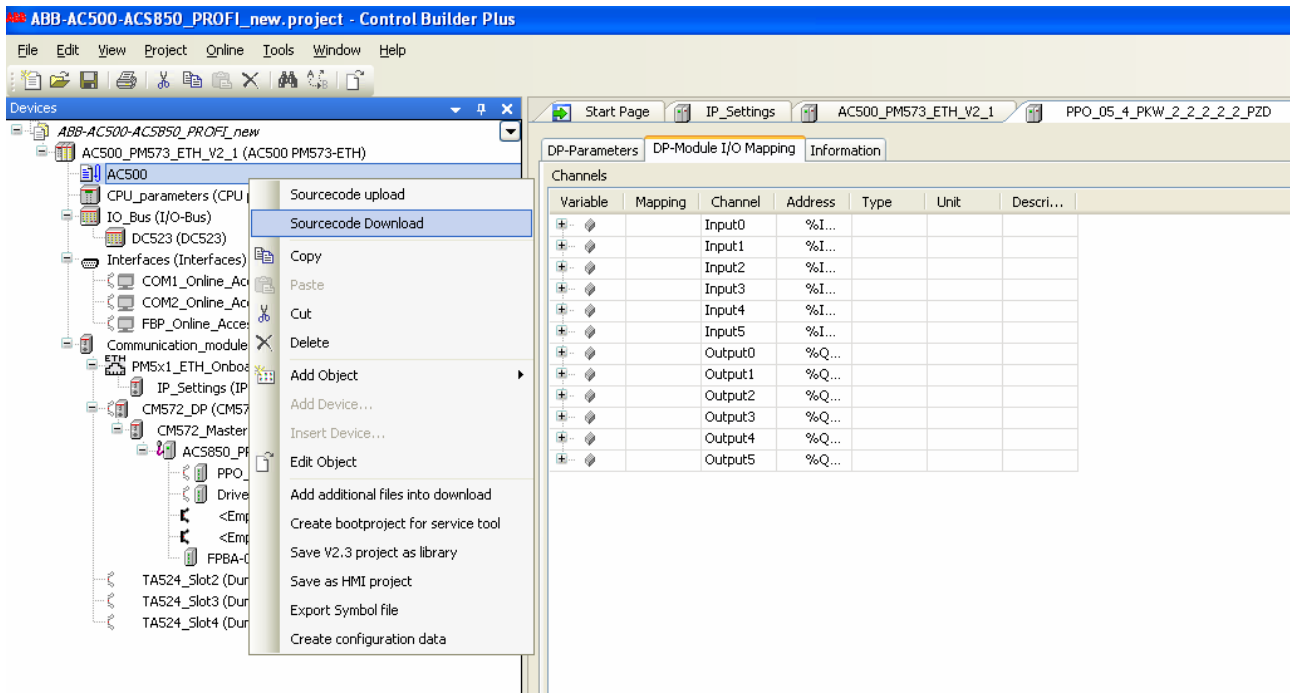
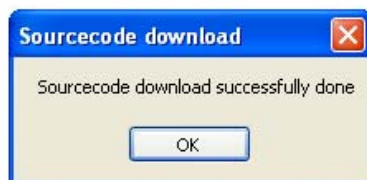


## HOW TO WRITE THE APPLICATION PROGRAM TO SD CARD

1. Make sure the complete backup of your project
2. Insert to PLC powered one SD card empty
3. Select from Control Builder with right mouse → the CPU
4. Select Sourcecode Download
5. During the writing of SD card the green led RUN of the CPU is blinking



6. The writing of SD Card could be take few minutes
7. When the writing is complete, Control Builder advise the complete success of the operation



8. Remove the SD card from the CPU
9. The structure of SD memory is like this ( Removable disk F ) :

File Modifica Visualizza Preferiti Strumenti ?

Indietro Cerca Cartelle

Indirizzo F:\USERDATA\PM573ETH\USERPROJ

Cartelle

- Desktop
- Documenti
- Risorse del computer
  - Floppy da 3,5 pollici (A:)
  - Disco locale (C:)
  - Unità DVD-RAM (D:)
  - Unità CD (E:)
  - Disco rimovibile (F:)
    - FIRMWARE
      - PM573ETH
    - USERDATA
      - PM573ETH
        - CONFDATA
        - RETDAT
        - USERDAT
        - USERPRG
        - USERPROJ**
- Pannello di controllo
- Documenti condivisi

SOURCE  
8.523 KB