

Setting an IP Address

A unique controller IP address must be set in order to avoid conflict with other devices on the Control Network. This subsection guides you to assign an IP address for your controller via the serial cable (TK212A) without being connected to the network. Furthermore, you will be instructed to setup the PC machine running your Control Builder. However, these instructions are strictly Microsoft Windows specific. A configuring tool, named IPConfig, is used to set the IP address for the Controller.

Setting IP Address for Controller

If you performed [Firmware Upgrade](#) on page 79, you can skip the preparations (identical instructions) and go directly to [Starting the IPConfig Tool](#) on page 83.

Preparations

Connecting the cable between the Control Builder and the Controller are exactly the same as described in [Firmware Upgrade](#) on page 79.

1. Connect a serial cable between the Control Builder PC and the Controller, as specified in [Table 3](#). For the type of cable, see [Appendix D, Communication Cables](#).

Table 3. Cable connection for the AC 800M Controller.

| Controller | Tool Port ⁽¹⁾ | Connector | Cable Name |
|------------|--------------------------|-----------|------------|
| AC 800M | COM 4 | RJ 45 | TK212A |

(1) The tool port COM4 is part of controllers PM85x, PM86x and PM891.

2. Turn on the power to Controller.

Starting the IPConfig Tool

- From the Windows Start menu select **All Programs > ABB Industrial IT 800xA > Engineering > Utilities > IPConfig**. An IP Config dialog opens.

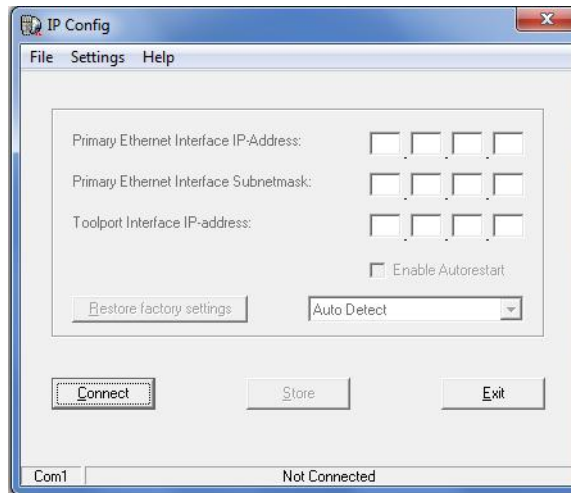


Figure 49. The IP Config dialog box.

- Click **Connect** and then press the **Init** push-button on the Controller until the **Run LED** starts to blink. Wait about a minute until the default IP address appears, see Figure 50.

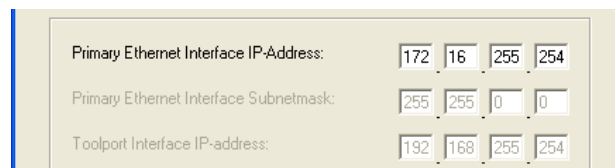


Figure 50. The IPConfig dialog box with factory default setting.



In the event of an error message “Connection failed”, you must check the cables and repeat these steps again.

- From the IP Config dialog menu, select **Settings > Advanced Mode**.
- Enter a unique IP address (obtainable from your Control Network Administrator). Example: IP address 172.16.84.124, see Figure 51.

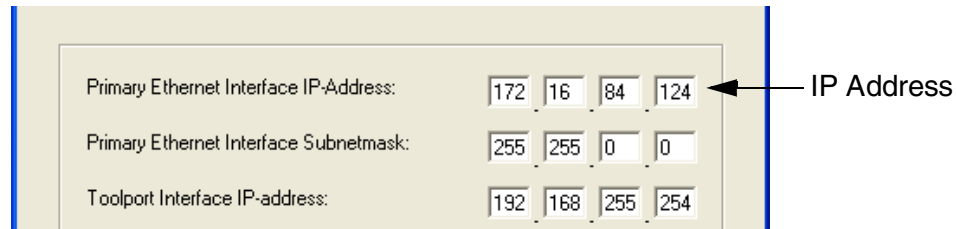


Figure 51. IP Config window for setting unique IP address.

7. Set Subnetmask 255.255.252.0 and then click **Set IP**. The new address will be sent to the Controller and an IP Config window re-opens, see Figure 52.

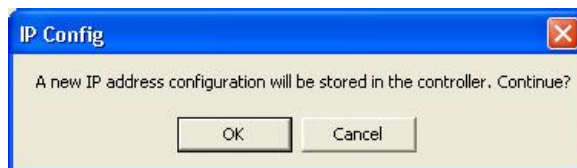


Figure 52. IP Config confirmation dialog window.

8. Click **OK**.
9. Click **Exit**.
10. Press the **Init** push-button on the controller until the **Run LED** starts to blink. The new IP address is not valid until the controller has been restarted.

Setting IP Address for PC

To setup the IP address (in Windows) for the Control Builder PC:

1. Go to **Start > Control Panel > Network and Internet > Network and Sharing Center > View network status and tasks**.
2. Click **Change Adapter Settings**.



You must setup the correct order of network adapters in the Control Builder PC; the Control Builder will use the IP address of the last network adaptor. Hence, the Control Network adaptor must come last.

3. Right-click **Local Area Connection** and select **Properties**. The Local Area Connection Properties dialog opens.